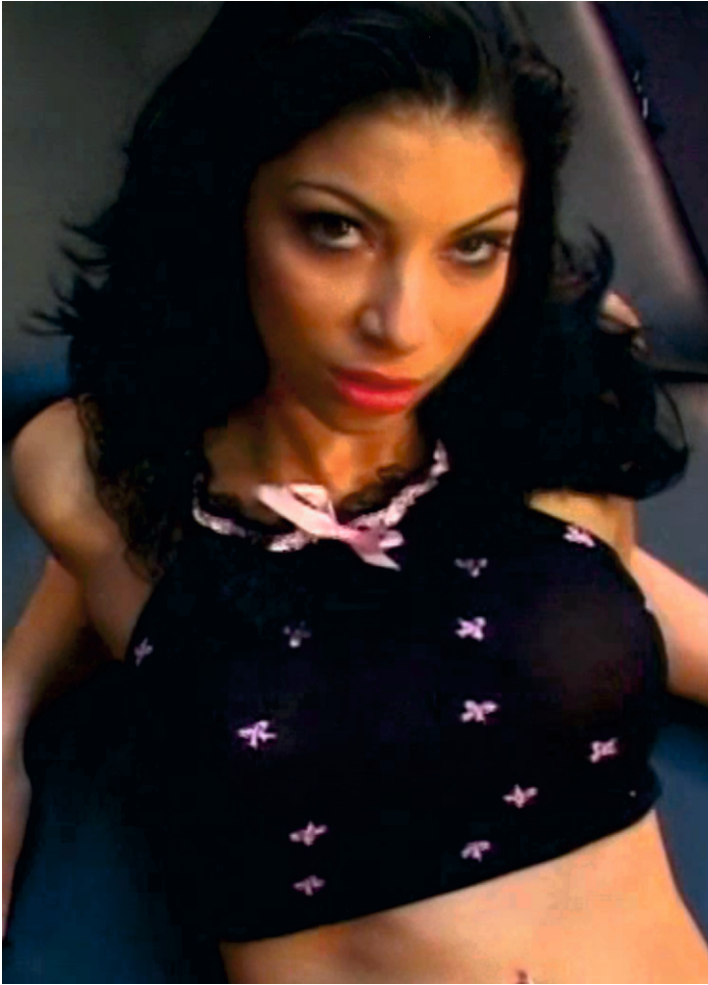


VirtualFem Soma



BIRTHPLACE: Calexico

STATE: CA - California

AGE: 20 (Birthday: January 28)

SIGN: Aquarius

HEIGHT: 5' 3"

WEIGHT: 101 lbs.

MEASUREMENTS: 34C-24-32

HAIR: Black

EYE COLOR: Brown

FAVORITE POSITION: Misionary

SHOE SIZE: 6.5

PIERCINGS: Right nostril and navel

TATS: Blade on shoulder, spider on navel

VirtualFem™

A Spa is always a good place to relax, leave all the worries behind and of course, meet interesting people.

And today is your lucky day...Soma wants to cash in her free massage coupon and thinks you're part of the staff.

This hot brunette needs to release her sexual tension, do a good job by giving her exactly what she needs!